



HUSTLER[®]

2017 PRODUCT LINE





WE MAKE THE BEST... THEN, WE MAKE IT BETTER

In 1964, the Hustler was introduced as the first zero-turn mower. That spirit of innovation continues today as Hustler Turf Equipment sets the standard in crafting and creating innovative outdoor power equipment products.

Developing new products and improving existing ones is a source of pride for the Midwest craftsmen and women at Hustler Turf Equipment. It's that pride, plus hard work and ingenuity that all comes together to create the strongest, highest performing, and best quality zero-turn mowers and utility vehicles that proudly carry the Hustler name.

HUSTLER'S 2017 PRODUCT LINE

UTILITY VEHICLES

HUSTLER MDV NEW	6
Imagine a tough, precision-built utility vehicle that combines the industry's most popular features with the revolutionary ability to lift, lower and dump its cargo. That's what the most innovative team in the turf industry has created in the Hustler MDV™ with patented LevelLift™ technology. We call it the MDV (Maximum Duty Vehicle) for the simple fact that you won't find a more rugged, more durable, more versatile vehicle than this one.	

UTILITY VEHICLE ACCESSORIES	10
--	----

ZERO-TURN MOWERS

RAPTOR	14
RAPTOR LIMITED	16
RAPTOR SD	18
RAPTOR SDX NEW	20
Hustler's new Raptor SDX features a new open deck design so grass can be easily discharged to avoid clumping. It also offers features like an engine guard, adjustable premium bolstered seat with armrests and internal suspension for more support, comfort and style.	
RAPTOR FLIP-UP	22
FASTRAK	24

COMMERCIAL LINE

FASTRAK SDX	26
X-ONE NEW	28
The newly redesigned X-ONE has a new clean, compact design making it simple to own and maintain. Other enhancements include an 11.7 gallon fuel capacity for all-day mowing and new bolstered seat with internal suspension and rubber isolated seat mounts. In addition, it features a 1.5 x 3" fully tubular commercial frame and 72" deck option.	
SUPER Z	30
SUPER Z HYPERDRIVE	32
HUSTLER Z DIESEL	34
SUPER 104	36
SUPER S	38
TRIMSTAR	40

RESIDENTIAL / COMMERCIAL ACCESSORIES

CATCHERS	42
ZERO-TURN MOWER ACCESSORIES	44

INTRODUCING THE
HUSTLER MDV™

LIFT, LOWER AND DUMP | UP TO **750 LBS** |
WITH PATENTED LEVELIFT™ BED TECHNOLOGY



HUSTLER MDV™

WHEN YOU'VE GOT SERIOUS WORK TO DO.

⚙️ OFFERING PATENTED LEVELIFT™ BED TECHNOLOGY.



LIMITED
WARRANTY

1
YEAR

ENGINE CONFIGURATIONS

Kohler: KDW 1003 (Diesel)

TOWING CAPACITY

1650 lbs

DRIVETRAIN

2WD/AWD

CARGO BOX CAPACITY

MDV: 1200 lbs

MDV with LevelLift: 750 lbs

SPEED (FORWARD)

37 mph

CARGO BED DIMENSIONS

45.9" x 58.2" x 11.5"

FUEL CAPACITY

14 US gallons

TIRES & WHEELS

Front & Rear: 25" x 10"-12"

UTILITY VEHICLE

ACCESSORIES



*not on pictured unit

ROOF

Provides year-round weather protection to operator and passenger.

DOORS

Provides comfort in inclement weather.

FRONT WINDSHIELD

Blocks wind, dust and other weather elements.

WIPERS

Helps resist rain, snow and ice buildup on windshield.

HEATER/DEFROST

Keeps operator warm on a cold winter day.

SIDE MIRRORS

Offers operator expanded visibility.

REAR VIEW MIRROR

Expands operator visibility.

POWERED DUMP BED

Available for standard bed model.

HITCH/WINCH MOUNT (FRONT)

Pulls tough loads and secures vehicle to trailer.

HITCH/WINCH MOUNT (REAR)*

Available with standard bed model.

SNOW BLADE

Removes snow and ice easily from outdoor surfaces.

BRUSH GUARD*

Protects the front of vehicle.

SKID PROTECTION KIT

Protects MDV underside.

A-ARM GUARDS

Provides protection for front suspension components.

WORK LIGHTS

Provides a wide range of light (ideal for tasks at night).

TAIL LIGHTS

Improves vehicle visibility and safety.

BEACON

Provides excellent visibility for vehicle bystanders.

ALUMINUM WHEELS*

Presents a more polished appearance to vehicle.

440 MAG 25 X 10-12*

More aggressive tire for extreme conditions.

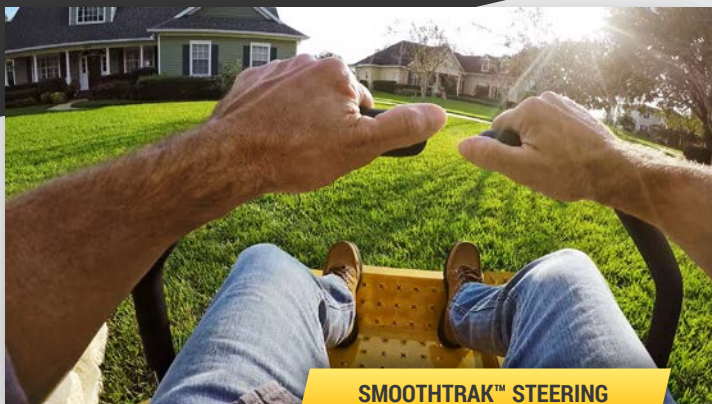
GRASSMASTER 24 X 12-12*

Less aggressive tire for turf protection.

WHY HUSTLER IS A BETTER MOWER

SMOOTHTRAK™ STEERING

It's what makes driving a Hustler a better experience. Our mowers have the smoothest and most precise steering. You'll glide around obstacles and make zero-radius turns with ease.



SMOOTHTRAK™ STEERING

PATENTED PARK BRAKE

Simple, convenient, system that automatically disengages/engages the parking brake when you close/open the steering levers. No extra park brake lever to worry about.



PATENTED PARK BRAKE

TOUGH FRAME

Heavy-duty fabricated steel frame provides unmatched durability.

SIMPLE DESIGN

Fewer parts means fewer problems and easier service.

HEAVY-DUTY DECK

Our decks are engineered to provide a clean, finished cut every time, with even distribution of grass clippings.

LOW CENTER OF GRAVITY

A reduced profile translates into superior handling and stability.



HEAVY-DUTY DECKS

RAPTOR®

LEGENDARY HUSTLER PERFORMANCE AND ENGINEERING
IN AN ENTRY-LEVEL ZERO-TURN MOWER.

↑ IDEAL FOR YARDS UP TO ONE ACRE.



LIMITED
WARRANTY

3 YEAR **NO**
HOUR LIMIT

CUTTING WIDTHS

Side-discharge: 36", 42" & 52"

SPEED (FORWARD)

6.5 mph

ENGINE CONFIGURATIONS

Kohler: 19hp 6600 Series HD
22/24hp 7000 Series HD

FUEL CAPACITY

3 US gallons

DECK HEIGHT

Hand-operated: 1.5" to 4.5" (1/2" increments)

FRONT TIRES

36/42/52": 11" x 4"

DRIVE SYSTEM

Hydro-Gear EZT

DRIVE TIRES

36": 18" x 7" 42/52": 18" x 8.5"

RAPTOR[®] LIMITED

FEATURES UPGRADES LIKE BOLSTERED SEAT WITH ARMRESTS, LARGE TIRES, ENGINE GUARD, HOUR METER.

↑ IDEAL FOR YARDS UP TO ONE ACRE.



LIMITED
WARRANTY

3 YEAR | **NO**
HOUR LIMIT

CUTTING WIDTHS

Side-discharge: 52"

SPEED (FORWARD)

6.5 mph

ENGINE CONFIGURATIONS

Kawasaki: 23hp FR691V **Kohler:** 24hp 7000 Series

FUEL CAPACITY

3 US gallons

DECK HEIGHT

Hand-operated: 1.5" to 4.5" (1/2" increments)

FRONT TIRES

11" x 5"

DRIVE SYSTEM

Hydro-Gear EZT

DRIVE TIRES

18" x 10.5"

RAPTOR[®] SD

**MORE FEATURES, MORE MUSCLE,
MAKES SMALL WORK OUT OF BIG JOBS.**

↑ **IDEAL FOR YARDS UP TO THREE ACRES.**



LIMITED
WARRANTY

3 YEAR | **300**
HOUR

CUTTING WIDTHS

Side-discharge: 36", 42", 48", 54" & 60"

SPEED (FORWARD)

7.5 mph

ENGINE CONFIGURATIONS

Kohler: 22hp 7000 Series HD
25/26hp 7000 Series PRO

FUEL CAPACITY

3 US gallons

DECK HEIGHT

Foot-operated: 1.5" to 4.5" (1/4" increments)

FRONT TIRES

36/42/48": 13" x 5" **54/60":** 13" x 6.5"

DRIVE SYSTEM

Hydro-Gear ZT2800
Serviceable w/ spin-on filters

DRIVE TIRES

36/42": 20" x 6.5" **48":** 20" x 8" **54/60":** 20" x 12"

RAPTOR[®] SDX

NEW OPEN DECK DESIGN AND LUXURY FEATURES
OFFER MORE SUPPORT, COMFORT AND STYLE.

↑ IDEAL FOR YARDS UP TO THREE ACRES.



LIMITED
WARRANTY

3 YEAR | **300**
HOUR

CUTTING WIDTHS

Side-discharge: 54"

SPEED (FORWARD)

7.5 mph

ENGINE CONFIGURATIONS

Kawasaki: 23hp FR691V

FUEL CAPACITY

3 US gallons

DECK HEIGHT

Foot-operated: 1.5" to 4.5" (1/4" increments)

FRONT TIRES

13" x 6.5"

DRIVE SYSTEM

Hydro-Gear ZT2800
Serviceable w/ spin-on filters

DRIVE TIRES

20" x 12"

RAPTOR[®] FLIP-UP

PUSH A BUTTON TO RAISE, LOWER, OR ADJUST DECK HEIGHT.

✂️ CLEANING AND CHANGING BLADES WAS NEVER SO EASY.



LIMITED
WARRANTY

4 YEAR | **400**
HOUR

CUTTING WIDTHS

Side-discharge: 48" & 54"

SPEED (FORWARD)

7 mph

ENGINE CONFIGURATIONS

Kohler: 25hp 7000 Series HD

FUEL CAPACITY

3 US gallons

DECK HEIGHT

Electric/Hydraulic: 1.5" to 4.5" (1/2" increments)

FRONT TIRES

9" x 3.5"

DRIVE SYSTEM

Hydro-Gear ZT2800
Serviceable w/ spin-on filters

DRIVE TIRES

48": 20" x 8" **54":** 20" x 10"

FASTRAK[®]

TOP-OF-THE-LINE RESIDENTIAL ZERO-TURN WITH MOST RUGGED FRAME, FORKS AND DECK IN THE INDUSTRY.

↑ IDEAL FOR RESIDENTIAL ESTATES.



LIMITED WARRANTY

4 YEAR | **400** HOUR

LIMITED
LIFETIME WARRANTY
FRAME & LEADING EDGE OF DECK

CUTTING WIDTHS

Side-discharge: 48", 54" & 60"

Rear-discharge: 48" & 54"

SPEED (FORWARD)

8 mph

ENGINE CONFIGURATIONS

Kawasaki: 23hp FR691V
24hp FR730V

Kohler: 23hp Confidant ZT730
25hp Confidant ZT740

FUEL CAPACITY

5 US gallons

DECK HEIGHT

Foot-operated: 1.5" to 4.5" (1/4" increments)

FRONT TIRES

48/48"RD: 13" x 5"

54/54RD/60": 13" x 6.5"

DRIVE SYSTEM

Commercial-duty Hydro-Gear ZT3100
Serviceable w/ spin-on filters

DRIVE TIRES

48/48"RD: 22" x 9.5"

54/54RD/60": 22" x 11"

FASTRAK[®] SDX

STRONGER, FASTER, TOUGHER, WITH COMMERCIAL-GRADE TRANSMISSIONS, UPGRADED CUSTOM SEAT AND MORE.



LIMITED
WARRANTY

4 YEAR | **1000**
HOUR

LIMITED
LIFETIME WARRANTY
FRAME & LEADING EDGE OF DECK

CUTTING WIDTHS

Side-discharge: 48", 54" & 60"

SPEED (FORWARD)

9 mph

ENGINE CONFIGURATIONS

Kohler: 23hp Confidant ZT730 w/ Commercial Durability Pkg.
25hp Confidant ZT740 w/ Commercial Durability Pkg.

FUEL CAPACITY

5 US gallons

DECK HEIGHT

Foot-operated: 1.5" to 4.5" (1/4" increments)

FRONT TIRES

48": 13" x 5" **54/60":** 13" x 6.5"

DRIVE SYSTEM

Commercial-duty Hydro-Gear ZT3400
Serviceable w/ spin-on filters

DRIVE TIRES

48": 22" x 9.5" **54/60":** 23" x 11"

X-ONE®

COMMERCIAL ZERO-TURN MOWER BUILT FOR ALL-DAY,
EVERY DAY PERFORMANCE.

LIMITED
WARRANTY

2 YEAR | **NO**
YEAR | HOUR LIMIT

OR

LIMITED
WARRANTY

5 YEAR | **500**
YEAR | HOUR



LIMITED
LIFETIME WARRANTY
FRAME & LEADING EDGE OF DECK

CUTTING WIDTHS

Side-discharge: 52", 60" & 72"
Rear-discharge: 54" & 60"

SPEED (FORWARD)

10.5 mph

ENGINE CONFIGURATIONS

Kawasaki: 23.5hp FX730 **Kohler:** 29hp 824 EFI
27hp FX850

FUEL CAPACITY

11.7 US gallons

DECK HEIGHT

Foot-operated: 1" to 5.5" (1/4" increments)

FRONT TIRES

13" x 6.5"

DRIVE SYSTEM

Parker unitized 12cc/rev pump
15.9ci/rev wheel motors

DRIVE TIRES

52/54"RD: 24" x 9.5" **60/60RD/72":** 24" x 12"

SUPER Z[®]

HIGH-PERFORMANCE ZERO-TURN WITH UNSURPASSED STRENGTH, RELIABILITY, SPEED, PRODUCTIVITY, AND A WARRANTY TO MATCH.

LIMITED WARRANTY

2 YEAR | **NO** HOUR LIMIT

OR

LIMITED WARRANTY

5 YEAR | **500** HOUR



LIMITED
LIFETIME WARRANTY
FRAME & LEADING EDGE OF DECK

CUTTING WIDTHS

Side-discharge: 54", 60", 66" & 72"

Rear-discharge: 60" & 72"

SPEED (FORWARD)

14 mph

ENGINE CONFIGURATIONS

Kawasaki: 27hp FX850

35hp FX1000

Kohler: 29hp 824 EFl

33hp 824 EFl

FUEL CAPACITY

12 US gallons

DECK HEIGHT

Foot-operated: 1" to 5.5" (1/4" increments)

FRONT TIRES

13" x 6.5"

DRIVE SYSTEM

Hydro-Gear 21cc pumps,
Parker TG high torque wheel motors,
3 gal. reservoir, oil cooler w/ fan & hot oil shuttle.

DRIVE TIRES

54": 24" x 9.5" **60/60RD/66/72/72"RD:** 24" x 12"

SUPER Z[®] HYPERDRIVE

INDUSTRY-LEADING HYPERDRIVE[®] SYSTEM & VX4[®] DECK TECHNOLOGY DELIVER UNRIVALED PERFORMANCE.

LIMITED WARRANTY

3 YEAR **NO** HOUR LIMIT

OR

LIMITED WARRANTY

5 YEAR **500** HOUR

5 YEAR **3000** HOUR **PUMPS AND MOTORS**

LIMITED **LIFETIME WARRANTY**
FRAME & LEADING EDGE OF DECK



CUTTING WIDTHS

Side-discharge: 60", 66" & 72"
Rear-discharge: 60" & 72"

SPEED (FORWARD)

16 mph

ENGINE CONFIGURATIONS

Vanguard: 36hp BIG BLOCK™
37hp BIG BLOCK™ EFI

FUEL CAPACITY

12 US gallons

DECK HEIGHT

Foot-operated: 1" to 5.5" (1/4" increments)

FRONT TIRES

13" x 6.5"

DRIVE SYSTEM

HyperDrive industrial Danfoss slipper piston pumps, Parker TG high torque wheel motors, 3 gal. reservoir, oil cooler w/ 9" fan & hot oil shuttle.

DRIVE TIRES

26" x 12"

HUSTLER Z DIESEL

THE POWER AND PRECISION OF A HUSTLER,
THE STAMINA OF A DIESEL.



LIMITED
WARRANTY

2 YEAR | **NO**
HOUR LIMIT

OR

LIMITED
WARRANTY

5 YEAR | **500**
HOUR

LIMITED
LIFETIME WARRANTY
FRAME & LEADING EDGE OF DECK

CUTTING WIDTHS

Side-discharge: 60" & 72"

Rear-discharge: 60" & 72"

SPEED (FORWARD)

12 mph

ENGINE CONFIGURATIONS

Shibaura: 25hp 3cyl. diesel

FUEL CAPACITY

14.4 US gallons

DECK HEIGHT

Foot-operated: 1" to 5.5" (1/4" increments)

FRONT TIRES

13" x 6.5"

DRIVE SYSTEM

Hydro-Gear 21cc pumps,
Parker TG high torque wheel motors,
1.3 gal. reservoir, oil cooler w/ fan & hot oil shuttle.

DRIVE TIRES

60/72": 24" x 12"

SUPER 104

A WIDE-AREA MOWER WITH THE MANEUVERABILITY OF A ZERO-TURN.

© UP TO 84 ACRES IN 8 HOURS AT 10 MPH.



LIMITED WARRANTY

2 YEAR | **NO** HOUR LIMIT

OR

LIMITED WARRANTY

5 YEAR | **500** HOUR

LIMITED
LIFETIME WARRANTY
ON THE FRAME

CUTTING WIDTHS

Rear-discharge: 104"

SPEED (FORWARD)

11 mph

ENGINE CONFIGURATIONS

Vanguard: 36hp BIG BLOCK™
37hp BIG BLOCK™ EFI

FUEL CAPACITY

12 US gallons

DECK HEIGHT

Hydraulic: 1" to 5.5" (1/4" increments)

FRONT TIRES

15" x 6"

DRIVE SYSTEM

HyperDrive industrial Danfoss slipper piston pumps, Parker TG high torque wheel motors, 3 gal. reservoir, oil cooler w/ 9" fan & hot oil shuttle.

DRIVE TIRES

26" x 12"

SUPER S™

STAND-ON WITH EXCEPTIONAL COMPACT STANCE
FOR TIGHT SPACES AND TRAILERING.

LIMITED
WARRANTY

2 YEAR | **NO**
YEAR | HOUR LIMIT

OR

LIMITED
WARRANTY

5 YEAR | **500**
YEAR | HOUR



CUTTING WIDTHS

Side-discharge: 36", 48", 52" & 60"

SPEED (FORWARD)

36": 8 mph **48/52/60":** 9 mph

ENGINE CONFIGURATIONS

Kawasaki: 15hp FS541V
22hp FX691V
23.5hp FX730V

Kohler: 23hp 824 EFI
25hp 824 EFI

FUEL CAPACITY

36": 6.5 US gallons **48/52/60":** 7.3 US gallons

DECK HEIGHT

Hand-operated: 1.5" to 5.5" (1/4" increments)

FRONT TIRES

36": 11" x 4" **48/52/60":** 13" x 5"

DRIVE SYSTEM

36":
Hydro-Gear 10cc pump &
Parker TL0195 wheel motor

48/52/60":
Hydro-Gear 12cc pump &
Parker TL0240 wheel motor

DRIVE TIRES

36": 18" x 8.5" **48/52":** 20" x 10" **60":** 20" x 12"

TRIMSTAR[®]

INNOVATIVE AND EASY-TO-USE WALK-BEHIND
FEATURING PATENTED H-BAR[®] STEERING.



LIMITED
WARRANTY

2 YEAR | **NO**
HOUR LIMIT

LIMITED
LIFETIME WARRANTY
LEADING EDGE OF DECK

CUTTING WIDTHS

Side-discharge: 36", 48" & 54"

SPEED (FORWARD)

6.3 mph

ENGINE CONFIGURATIONS

Kawasaki: 14.5hp FS481 18.5hp FS600
15hp FS541 23hp FS691 (electric start)

FUEL CAPACITY

3.4 US gallons

DECK HEIGHT

Hand-operated: 1.5" to 4.5" (1/4" increments)

FRONT TIRES

11" x 4"

DRIVE SYSTEM

Hydro-Gear ZT2800
Serviceable w/ spin-on filters

DRIVE TIRES

36": 18" x 6.5" **48/54":** 20" x 10"

CATCHERS



NON-POWERED CATCHER

Easy-on, easy-off hopper assemblies. The catcher holds 5.4 bushels. Available on all Raptor family mowers.



2-BAG POWERED CATCHER

Easy-on, easy-off blower and hopper assemblies. The catcher holds 7.2 bushels. Available on FasTrak and FasTrak SDX.



SIDE CATCHER

Easy-on, easy-off catcher has a 3.5 bushel capacity. Available on the FasTrak, FasTrak SDX, X-ONE, and Super S.



3-BAG POWERED CATCHER

Easy-on, easy-off blower and hopper assemblies. The 3-bag catcher holds 12 bushels. Available on X-ONE, Super Z, and HyperDrive.



SINGLE BAG CATCHER

Easy-on, easy-off catcher has a three bushel capacity. Available on the 36/48/54" TrimStar.



BACVAC

Electric accuated DFS catcher system. Easy-on, easy-off versatility with a 10-bushel capacity. Blower is the same as the 3-bag catcher. Available on X-ONE, Super Z, and HyperDrive.

ZERO-TURN MOWER ACCESSORIES



*not on pictured unit

ENGINE GUARD

Provides protection to the engine and adds to the great look of the machine.

SEMI-PNEUMATIC TIRES

Resists flats better.

FLEX FORKS

Improves operator comfort and provides a more even cut, especially over uneven terrain or at higher speeds.

MULCH KIT

Recycles clippings back into the soil to reclaim nutrients for your lawn.

STRIPE KIT*

Helps provide a professional manicured finish to your lawn. Depending on the mower, rubber flap or steel cylinder options are available.

ARMREST KIT

Provides more comfort while you mow.

STEERING EXTENSION KIT

Allows height adjustment of steering levers to make your mowing experience as comfortable as possible.

LIGHT KIT

Extends your productivity into the late hours. Kit contains two high-quality 12-volt lights with a switch that mounts in the instrument panel.

HOUR METER

Helps keep track of service intervals.

SEAT ISOLATOR*

Provides comfort in the roughest mowing conditions.



Visit hustlerturf.com

for a complete listing and visuals of all attachments.

HUSTLERTURF.COM

YOUR RESOURCE FOR EVERYTHING HUSTLER

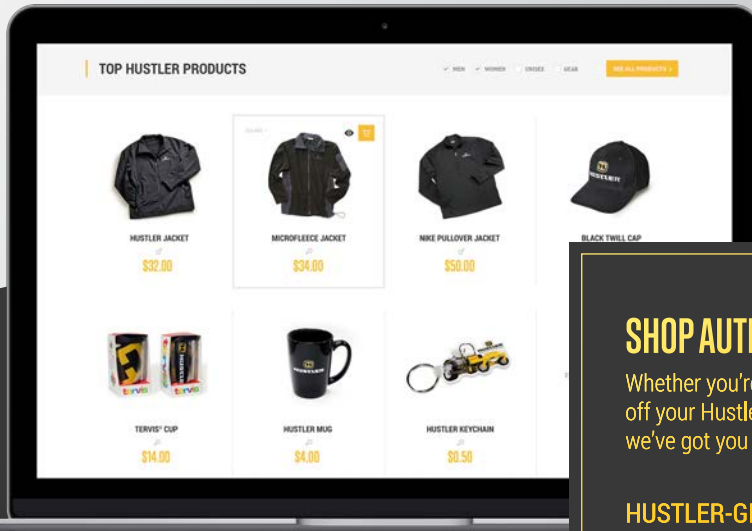
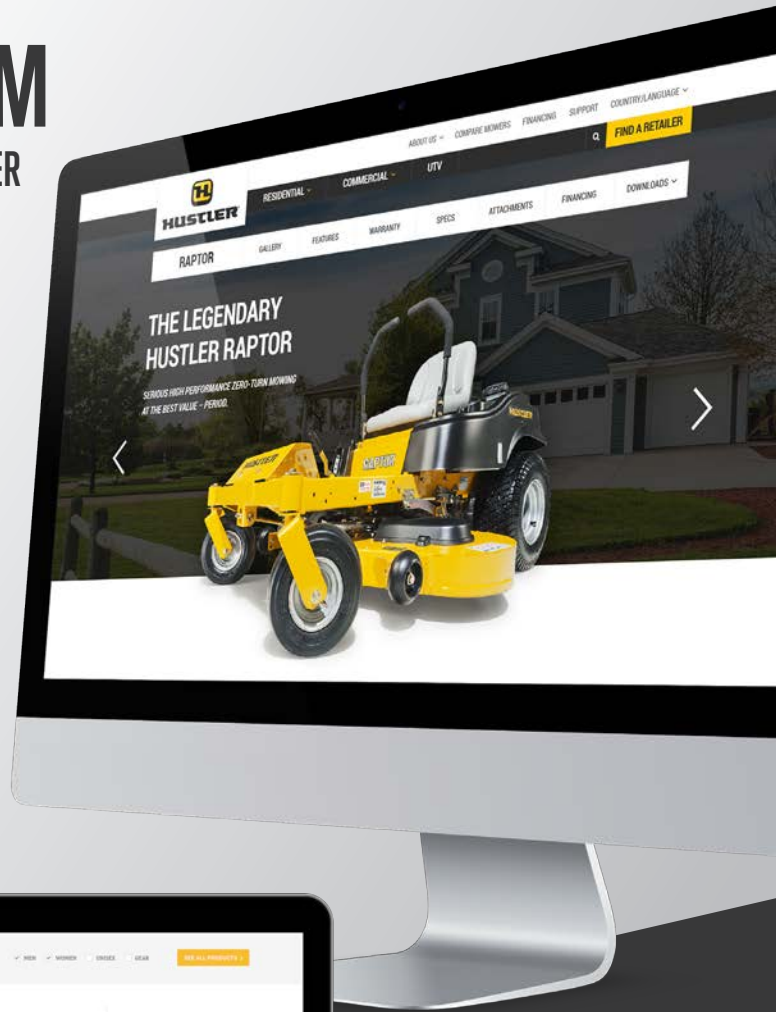
TRYING TO DECIDE WHICH HUSTLER MOWER IS THE BEST FOR YOU?

Visit hustlerturf.com to find the Hustler product that's perfect for you.

SITE FEATURES

- ▶ Product videos of our mowers in action
- ▮ Detailed specifications on all our products
- 🔧 A compare mowers tool
- 💰 Information on financing options

And so much more!



SHOP AUTHENTIC HUSTLER GEAR

Whether you're outfitting a landscape crew, showing off your Hustler pride, or looking for that perfect gift, we've got you covered.

[HUSTLER-GEAR.HUSTLERTURF.COM](https://hustler-gear.hustlerturf.com)



© 2017 HUSTLER TURF EQUIPMENT

SPECIFICATIONS SUBJECT TO CHANGE WITHOUT NOTICE.
VISIT WWW.HUSTLERTURF.COM FOR THE MOST CURRENT SPECIFICATIONS.
ADV 1277 11-16

HUSTLERTURF.COM